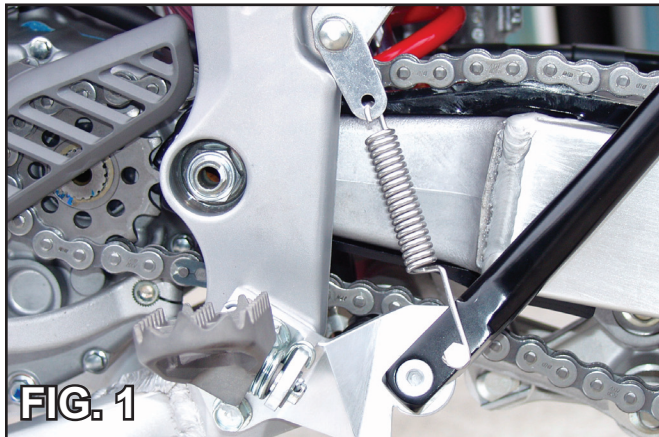


## 5501-00/5501-10 KICKSTAND INSTALLATION

07-08 SUZUKI RMZ250  
06-07 SUZUKI RMZ450  
10-12 SUZUKI RMZ250  
08-12 SUZUKI RMZ450

### 5501-00/5501-10

- 07-08 SUZUKI RMZ250
- 06-07 SUZUKI RMZ450



2007 Suzuki RMZ450 Kickstand Installed

1. Remove stock foot-peg, foot-peg hardware, & foot-peg hanger from frame.
2. Install provided Trail Tech foot-peg bracket, using the OEM fasteners. (Use thread locking compound on the pivot bolt to ensure it does not back out.)
3. Re install foot peg & foot-peg hardware following manufacturers recommended installation procedure.
4. Remove the stock side panel fastener and insert through the provided spring hanger tab. (Fig 1)



Continued on other side >>

5. Re-install the side panel fastener, and tighten down hand tight to start.

*Note: Do not tighten down to manufacturers torque specification until spring is hung. Failure to do so may cause your spring to bind or break during use!*

6. Hook spring into spring hanger mounting tab shown in (Fig. 2)
7. Using safety glasses & a spring puller stretch the spring and latch it onto the stand arm mounting point. (Fig. 2)
8. Tighten sub-frame fastener to manufacturers torque specification.



## IMPORTANT: WEAR EYE PROTECTION WHEN HANGING SPRINGS!

**Note:** After every ride it is important to check your kickstand thoroughly for the following:

- Loose or damaged bolts
- Bent or damaged kickstand leg or bracket
- Damaged spring

Damaged or broken parts can result in serious injury! If any part of your stand has become

damaged do not ride the machine! Contact a factory trained technician or Trail Tech directly for service or repairs.

### LIMITED WARRANTY

TRAIL TECH INC. WARRANTS TRAIL TECH KICKSTAND PRODUCTS TO BE FREE FROM DEFECTS IN MATERIAL AND WORKMANSHIP UNDER NORMAL USE AND IF PROPERLY INSTALLED FOR A PERIOD OF SIX MONTHS FROM DATE OF PURCHASE. IF FOUND TO BE DEFECTIVE AS MENTIONED ABOVE, IT WILL BE REPLACED OR REPAIRED. THIS SHALL CONSTITUTE THE SOLE REMEDY OF THE PURCHASER AND THE SOLE LIABILITY OF TRAIL TECH INC. TO THE EXTENT PERMITTED BY LAW, THE FOREGOING IS EXCLUSIVE AND IN LIEU OF ALL OTHER WARRANTIES OR REPRESENTATIONS WHETHER EXPRESSED OR IMPLIED, INCLUDED ANY LIMITED WARRANTY OF MERCHANTABILITY OR FITNESS. IN NO EVENT SHALL TRAIL TECH INC. BE LIABLE FOR SPECIAL OR CONSEQUENTIAL DAMAGES.

## 5502-00/5502-10 KICKSTAND INSTALLATION

07-08 SUZUKI RMZ250

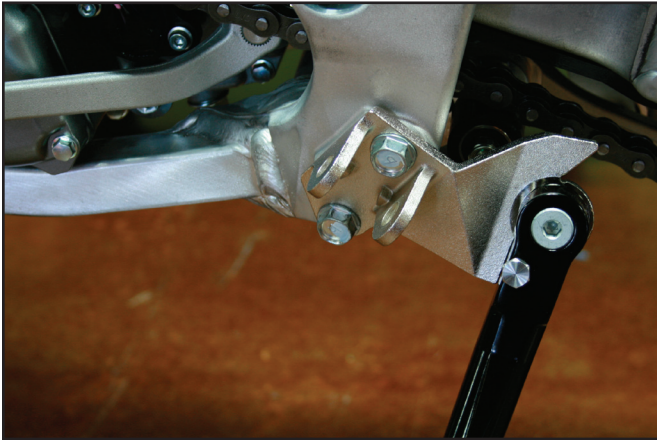
06-07 SUZUKI RMZ450

10-12 SUZUKI RMZ250

08-12 SUZUKI RMZ450

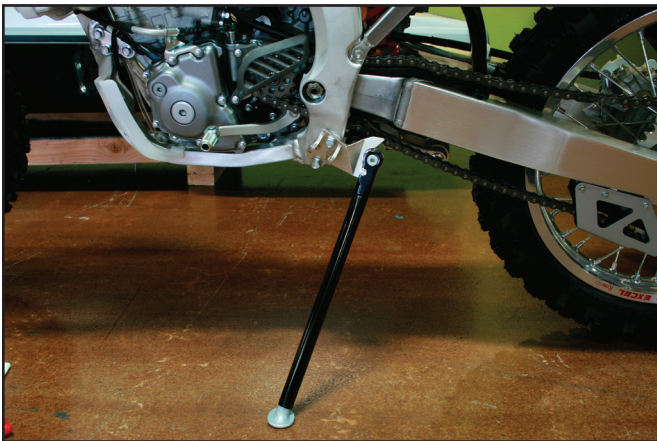
### 5502-00/ 5502-10

- 10-12 SUZUKI RMZ250
- 08-12 SUZUKI RMZ450



2010 Suzuki RMZ250 Kickstand Installed

1. Remove stock foot-peg, foot-peg hardware, & foot-peg hanger from frame.
2. Install provided Trail Tech foot-peg bracket, using the OEM fasteners. *(Use thread locking compound on the pivot bolt to ensure it does not back out.)*
3. Re install foot peg & foot-peg hardware following manufacturers recommended installation procedure.
4. Remove the stock side panel fastener and insert through the provided spring hanger tab.

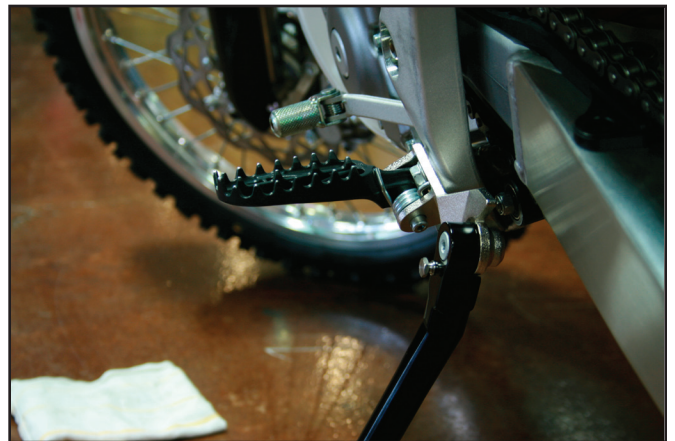


Continued on other side >>

5. Re-install the side panel fastener, and tighten down hand tight to start.

*Note: Do not tighten down to manufacturers torque specification until spring is hung. Failure to do so may cause your spring to bind or break during use!*

6. Hook spring into spring hanger mounting tab.
7. Using safety glasses & a spring puller stretch the spring and latch it onto the stand arm mounting point.
8. Tighten sub-frame fastener to manufacturers torque specification.



## IMPORTANT: WEAR EYE PROTECTION WHEN HANGING SPRINGS!

**Note:** After every ride it is important to check your kickstand thoroughly for the following:

- Loose or damaged bolts
- Bent or damaged kickstand leg or bracket
- Damaged spring

Damaged or broken parts can result in serious injury! If any part of your stand has become

damaged do not ride the machine! Contact a factory trained technician or Trail Tech directly for service or repairs.

### LIMITED WARRANTY

TRAIL TECH INC. WARRANTS TRAIL TECH KICKSTAND PRODUCTS TO BE FREE FROM DEFECTS IN MATERIAL AND WORKMANSHIP UNDER NORMAL USE AND IF PROPERLY INSTALLED FOR A PERIOD OF SIX MONTHS FROM DATE OF PURCHASE. IF FOUND TO BE DEFECTIVE AS MENTIONED ABOVE, IT WILL BE REPLACED OR REPAIRED. THIS SHALL CONSTITUTE THE SOLE REMEDY OF THE PURCHASER AND THE SOLE LIABILITY OF TRAIL TECH INC. TO THE EXTENT PERMITTED BY LAW, THE FOREGOING IS EXCLUSIVE AND IN LIEU OF ALL OTHER WARRANTIES OR REPRESENTATIONS WHETHER EXPRESSED OR IMPLIED, INCLUDED ANY LIMITED WARRANTY OF MERCHANTABILITY OR FITNESS. IN NO EVENT SHALL TRAIL TECH INC. BE LIABLE FOR SPECIAL OR CONSEQUENTIAL DAMAGES.